

1-001-73

8-31-73

BOOK

P. Leslie

V. Payne

M.L.I.S.C.

LOGAN CACHE

AIRPORT

SURVEY FOR

AND MILLER

& B

DONALD ANDREWS

HANGERS

1-001-73

8-31-73

π P. L. L. e

φ V. Payne

LOGAN-CACHE  
AIRPORT  
SURVEY FOR  
E. A. MILLER

&

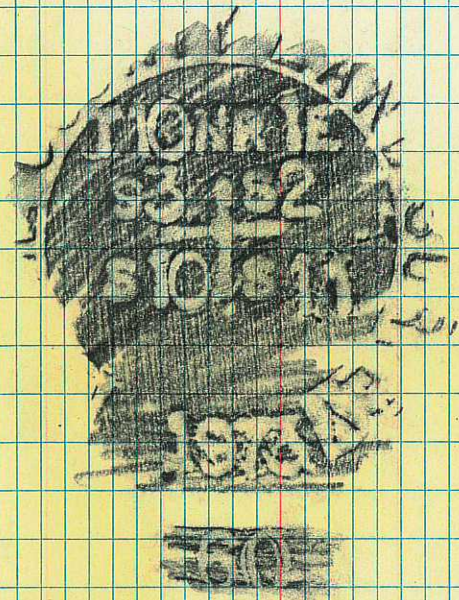
RONALD ANDREWS  
HANGERS

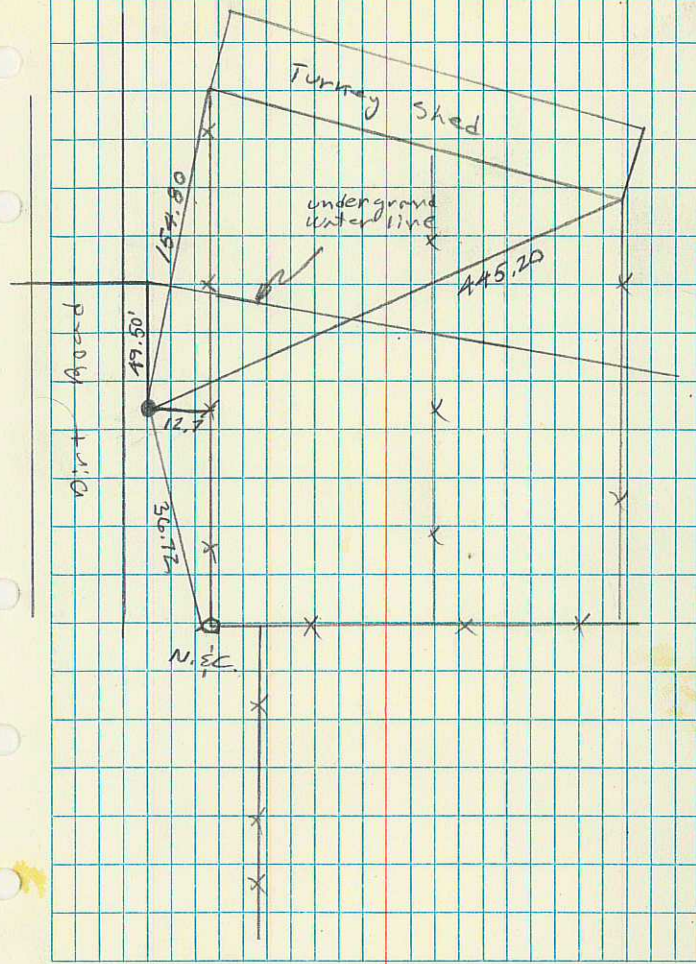
1-6-73

#60  
NE CAR SECTION 10  
TION 101E

corner re-established  
by Valley Engineers  
Corp.

set 2" I.P. 24" long  
18" in ground.  
(No concrete)





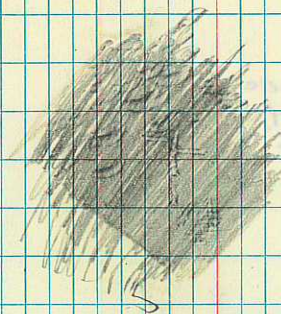
#61

EVA section 3

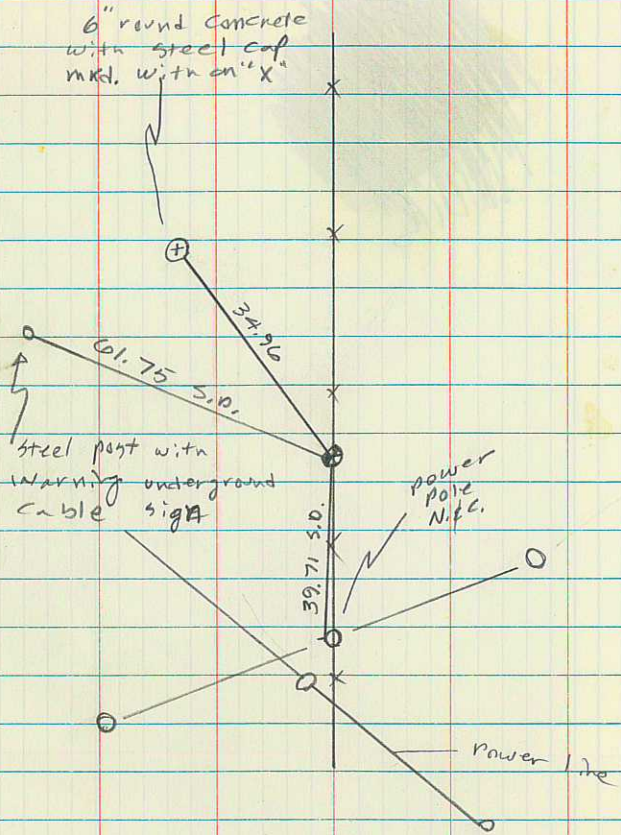
TION RLE

Found rebar firmly  
set with steel cap  
mkd.  $\frac{1}{4}$ .

6



1-13-73 6



#62

NE corner Sec. 9  
TIONRIE

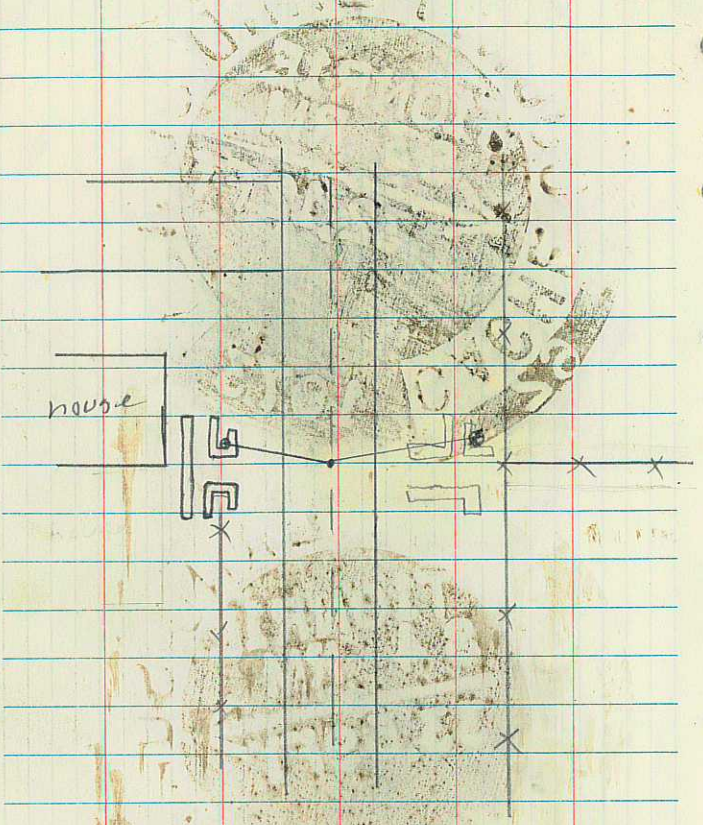


Handwritten notes on a lined page, mostly obscured by heavy black scribbles. Faintly visible text includes "CROSS" and "WIND".

Handwritten notes on a lined page, featuring two large circular diagrams drawn with black ink. The diagrams contain illegible text and symbols. A small number "2" is written in the top right corner.

1-13-73

house

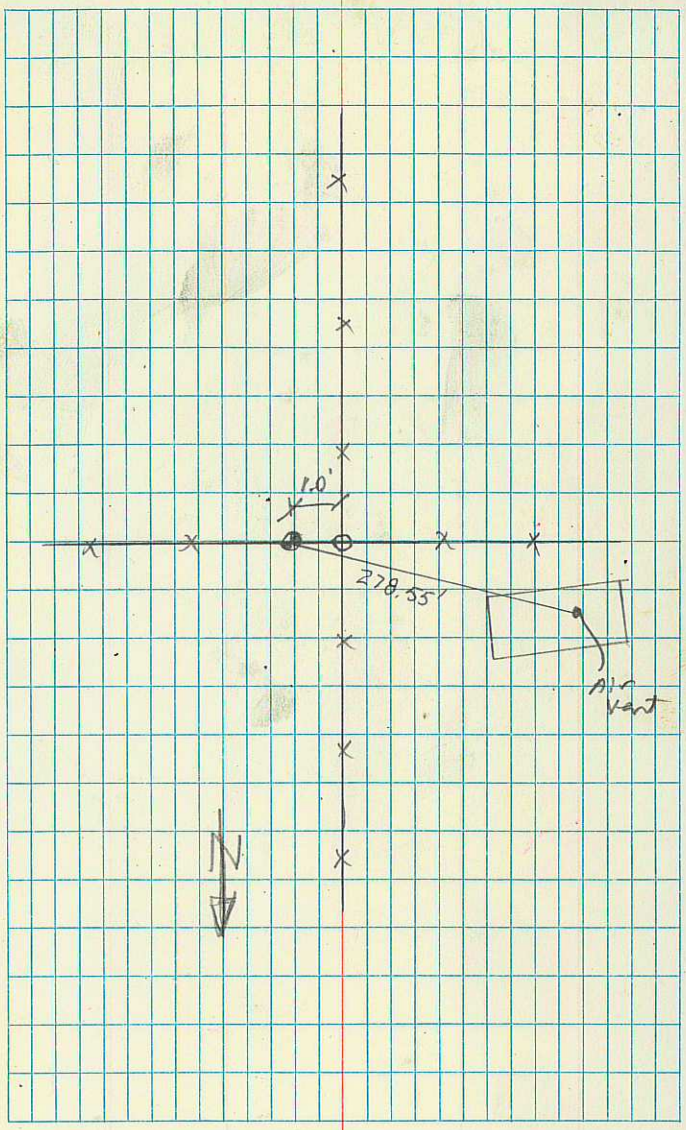


#63

NE corner section 22  
T11N R1E

10  
[Faint, illegible handwriting on lined paper]

9  
[Large, dark, illegible scribble on grid paper]



#64

NE Corner Sec. 4

T10 N R1E

Set Z RM's

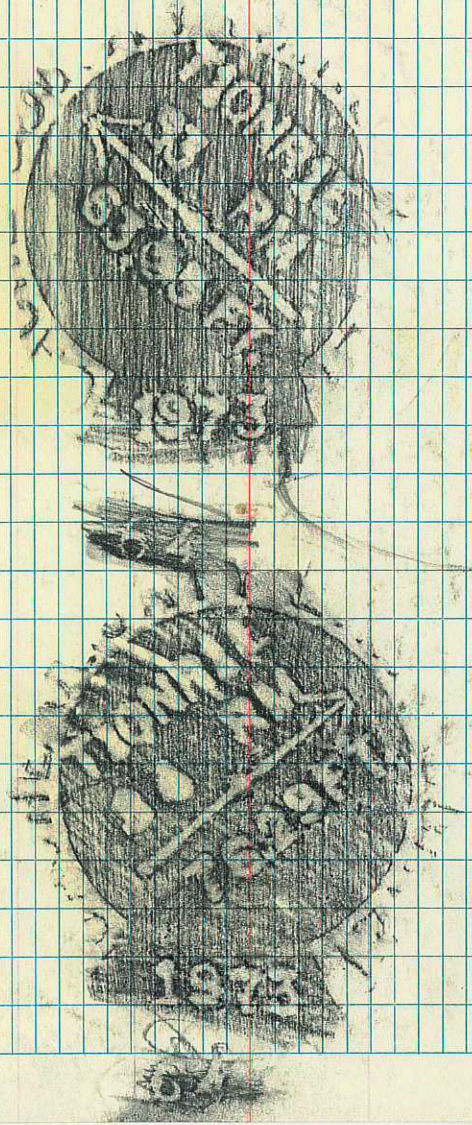
S-East

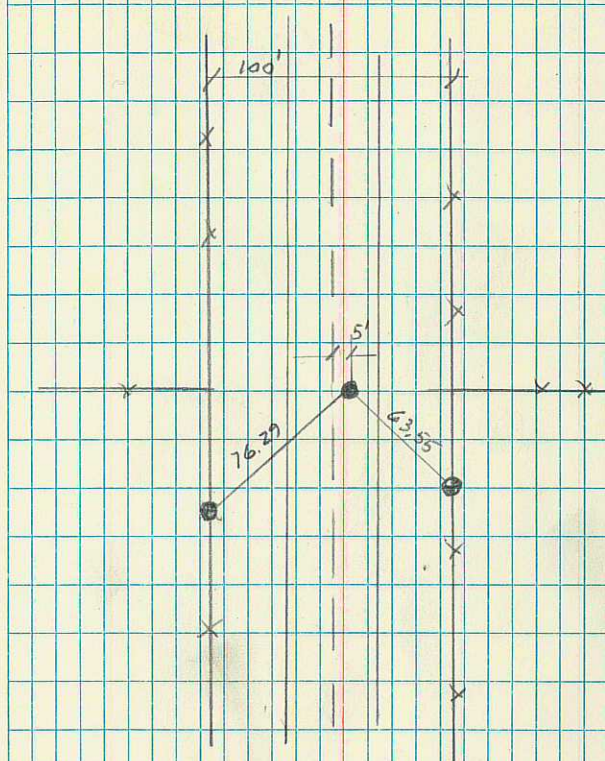
63.55 ft. 18" in gold.

S-West

76.29 ft. (at gold level)

12





14  
4-3-73

#65

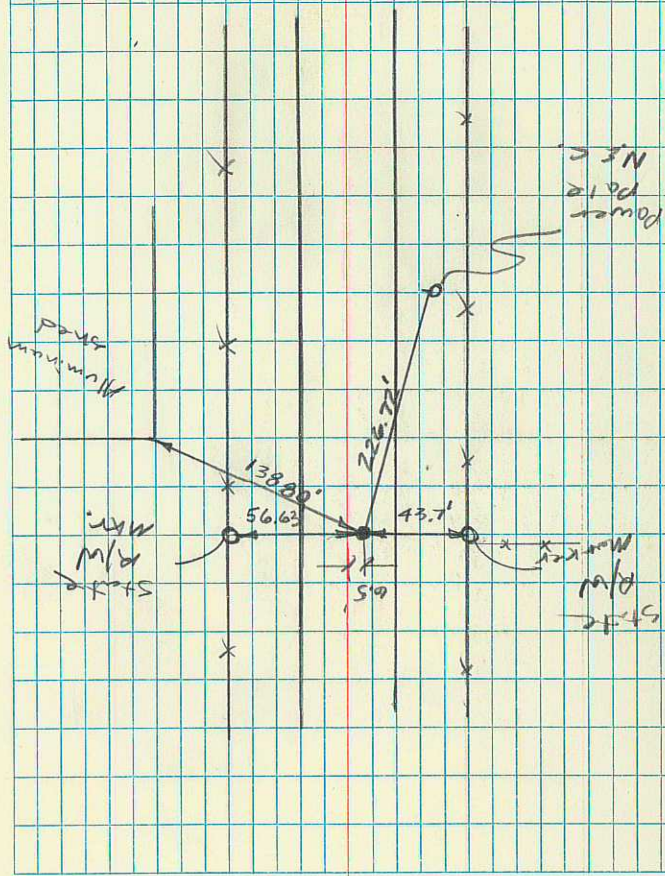
NE. COR. SEC. 33

TUN, RIE.



Found Rail Road spike  
in oil road set by  
Erwin Moser.

160.72  
66.00  
-----  
226.72



4-3-75 16

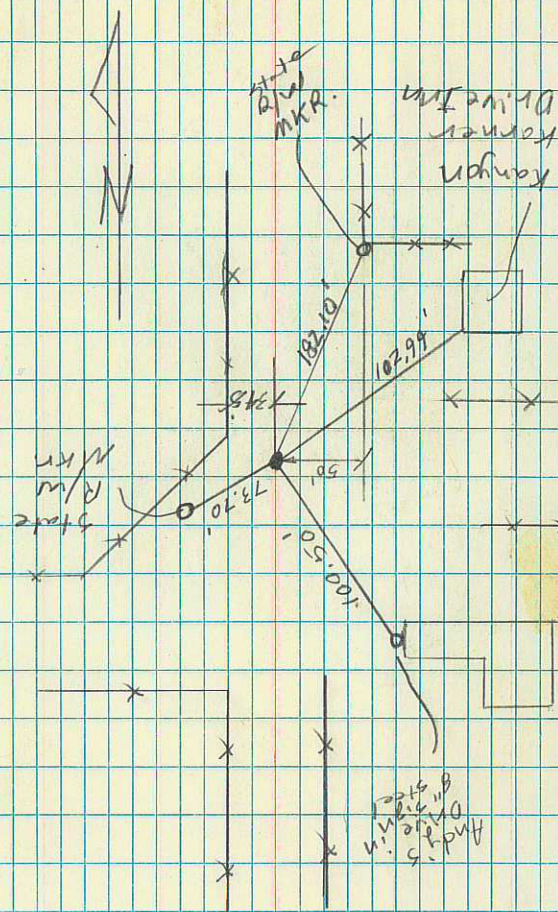
#66

E 1/4 cor. sec. 4

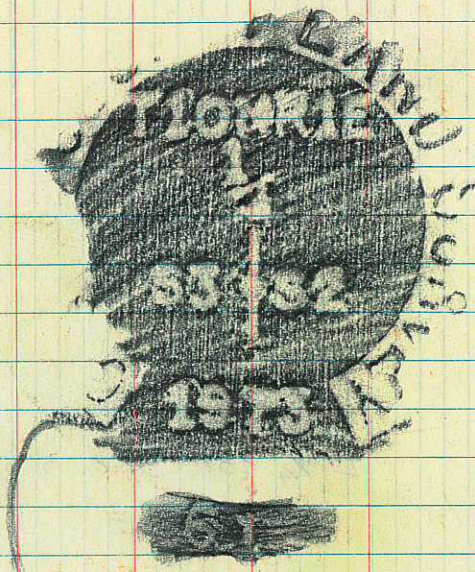
T 10N R 1E

Established from State  
Highway ties ~~to fence~~  
lines

Set Rail Road spike  
 $\frac{1}{2}$ " below surface of  
oil Asphalt Road.



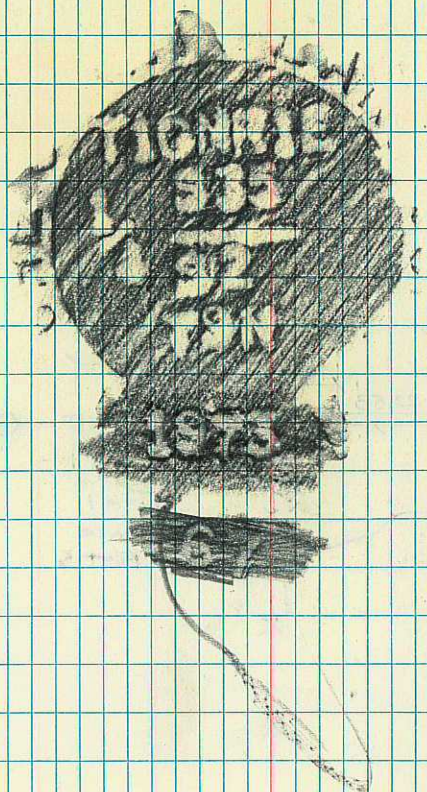
# 61  
E 1/4 COR. SEC. 3  
T 10N R 1E

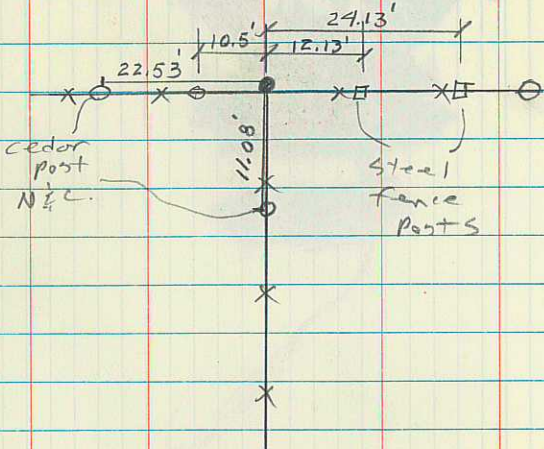


N 1/4 COR. SEC. 2  
T 9 N R 1 E

Found a Sandstone  
15x7x7 ins. at fence  
cor. lying loose on  
ground. Sandstone was  
broken in half with  
top portion of  $\frac{1}{4}$  very  
plainly mtd. on top  
portion of stone.

set 2" I.P. 24" long  
18" in d. at fence cor.  
deposit original stone  
alongside I.P.



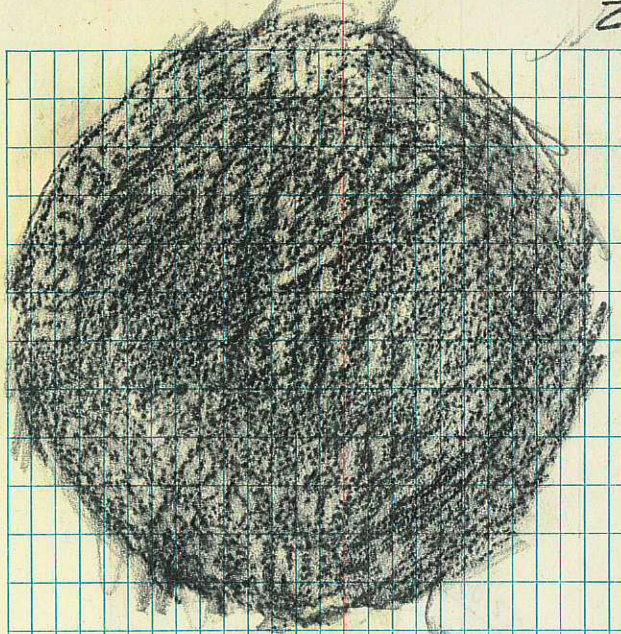
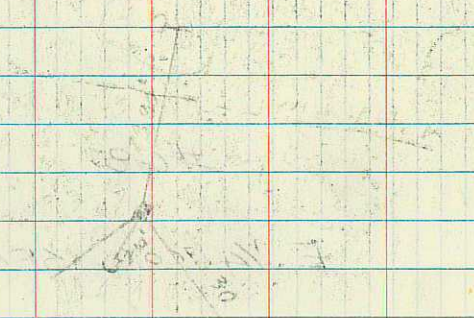


#68

E 1/4 COR. SEC. 14

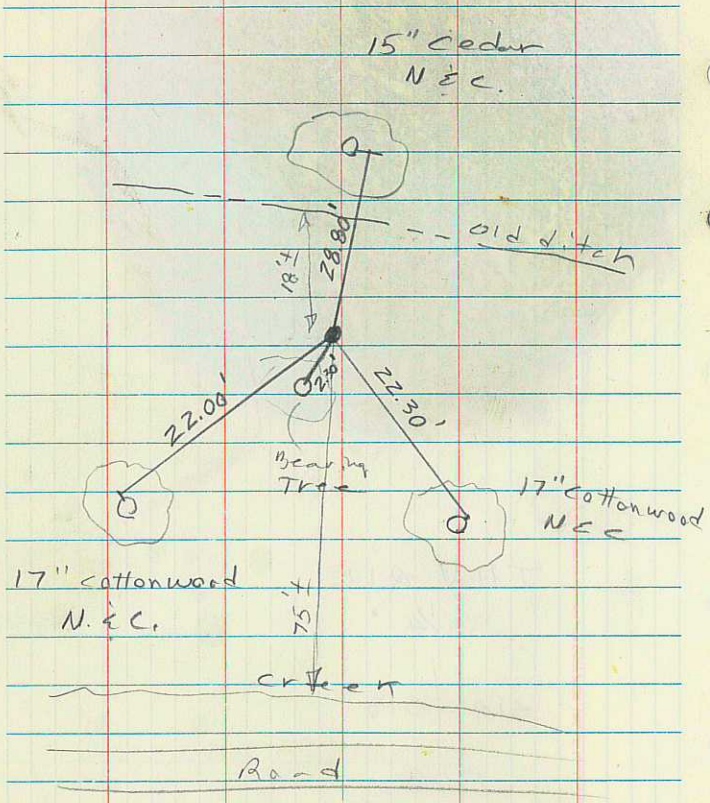
TINN RIE

Found Standard U.S.  
I.P. and Brass Cap.  
In a mound of stone.



TIN RIF  
1/4  
514 | 513  
1968





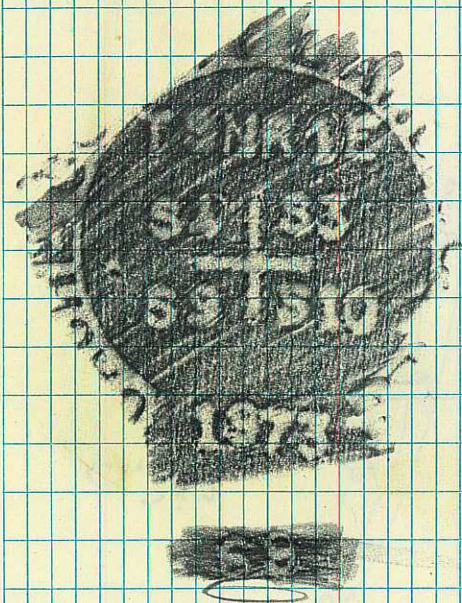
#69

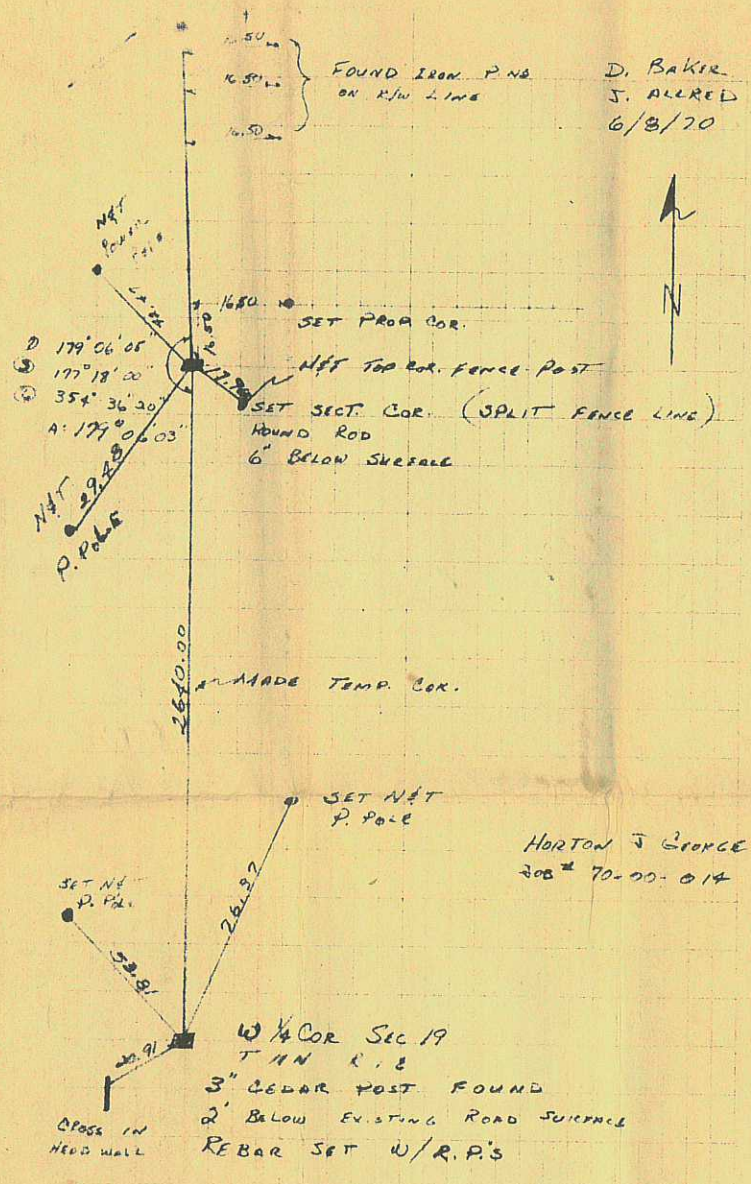
NE. COR. SEC. 9

T9N R1E

Found a sandstone  
17x13x6 ins firmly set  
and very plainly marked  
with 5 notches on S.  
and 3 notches on E.  
faces.

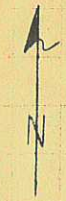
set 2" I.P. 24" long  
18" in gd. Bury on  
corner stone along side  
I.P.





179° 06' 05"  
 177° 18' 20"  
 354° 36' 20"  
 A: 177° 06' 03"

FOUND IRON P.N.G.  
 ON R/W LINE  
 D. BAKER  
 J. ALLRED  
 6/8/70



SET PROP. COR.  
 N&T TOP COR. FENCE POST  
 SET SECT. COR. (SPLIT FENCE LINE)  
 ROUND ROD  
 6" BELOW SURFACE

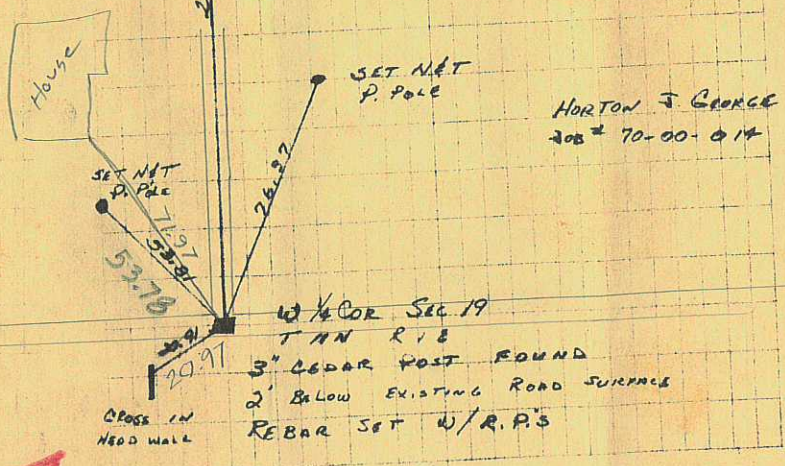
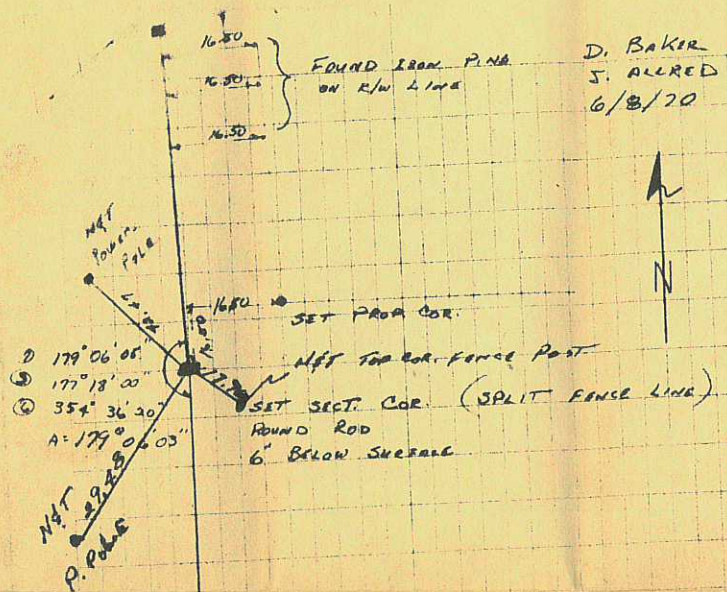
2610.00  
 MADE TEMP. COR.

HORTON J. GEORGE  
 JOB # 70-00-014

SET N&T P. POLE  
 SET N&T P. POLE  
 53.81  
 261.97

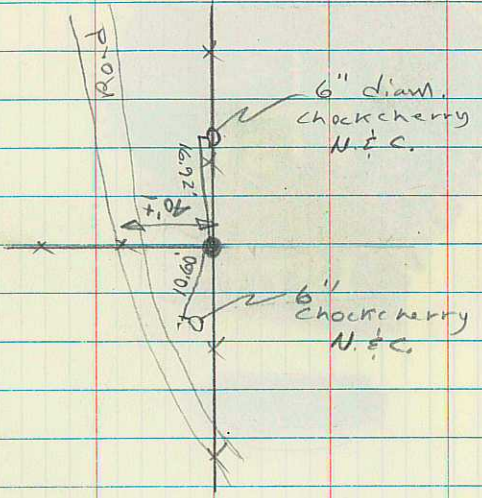
W 1/4 COR. SEC 19  
 T 4 N R. 1 E  
 3" CEDAR POST FOUND  
 2' BELOW EXISTING ROAD SURFACE  
 REBAR SET W/R.P.'S

CROSS IN  
 HEAD WALL



71.97

#73

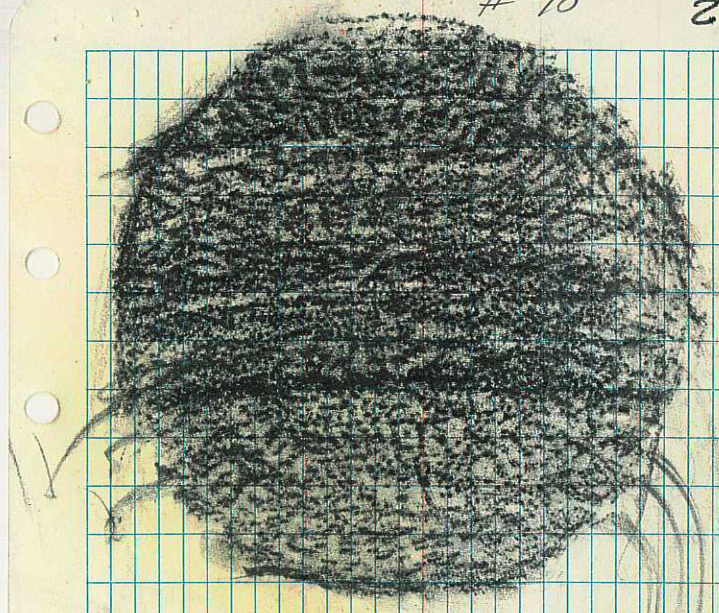


#70

E. 1/4 COR. SEC. 24  
T 13N R 1E

Found standard B.M.  
Brass cap. set alongside  
"X" and 1/4 inches on  
stationary bolder.

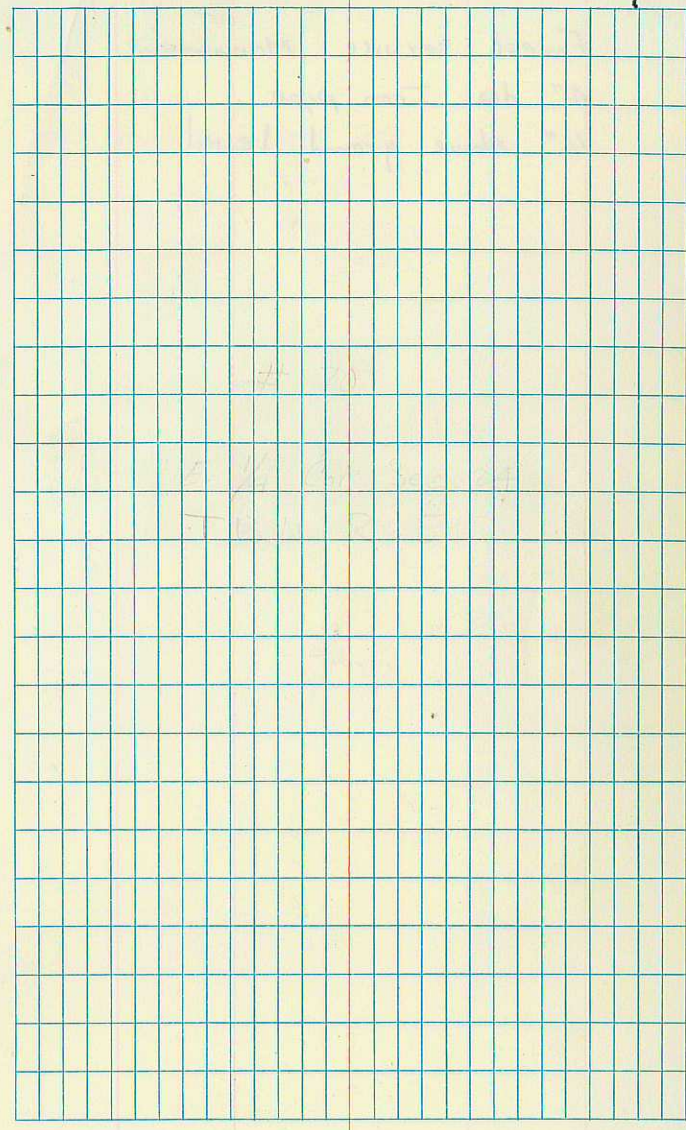
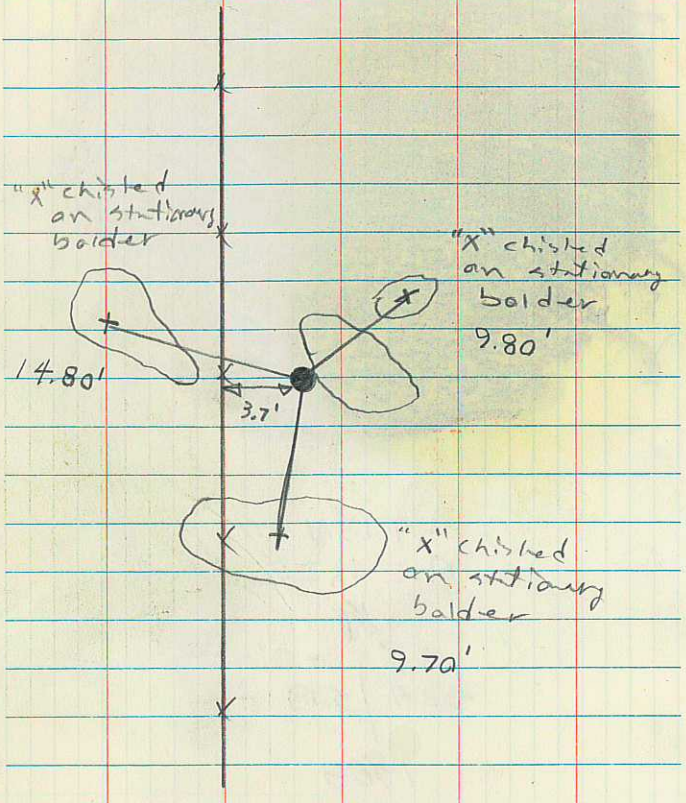
05 5814  
720



T13N  
R1E R2E  
1/4

524 / 519

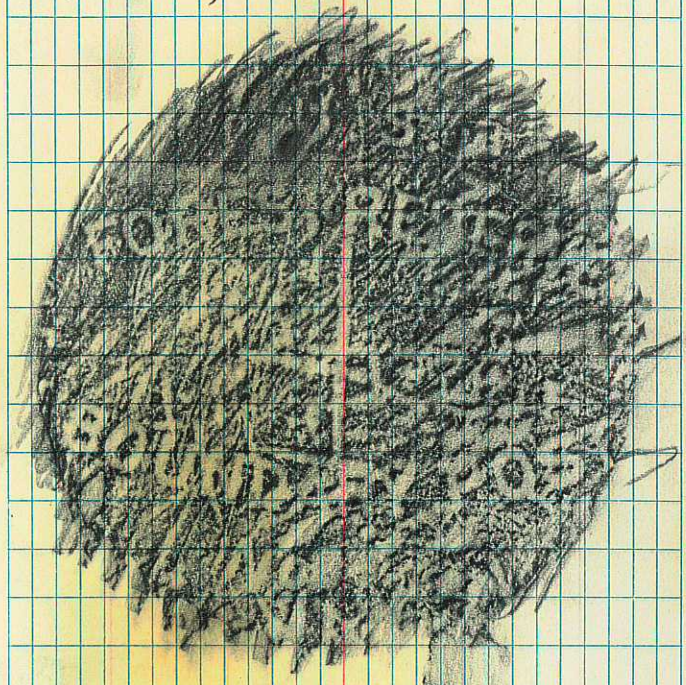
1968



Forest service Monument  
4" dia. Iron pipe  
16" above ground level.

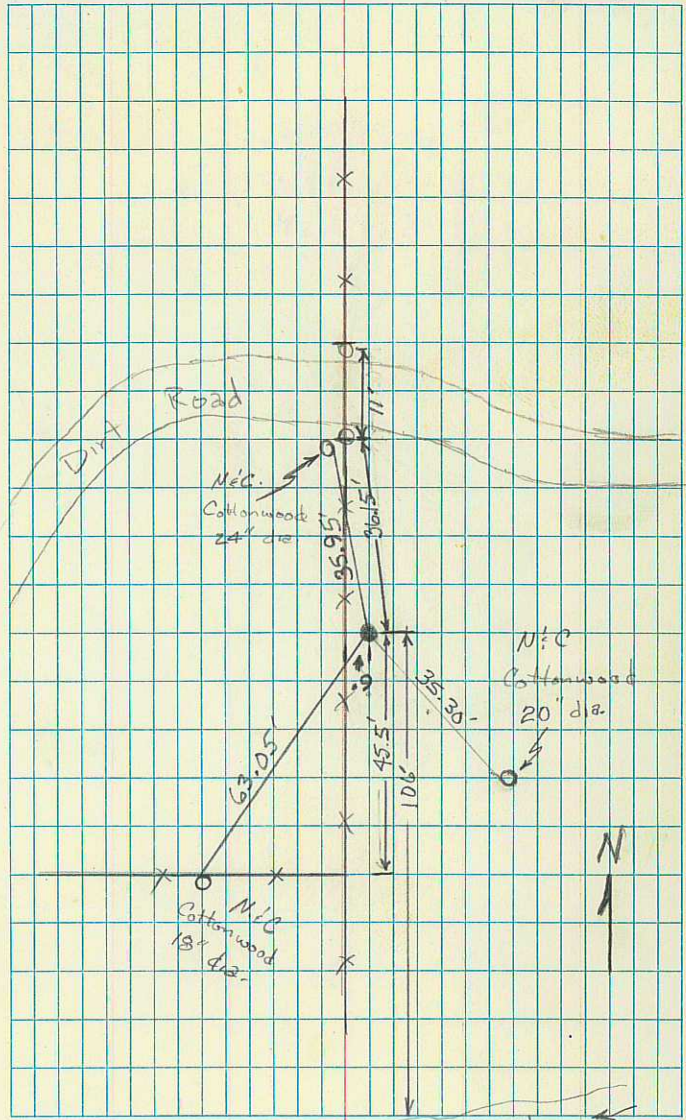
~~#70~~

28



No. 88





6-12-73

# 71

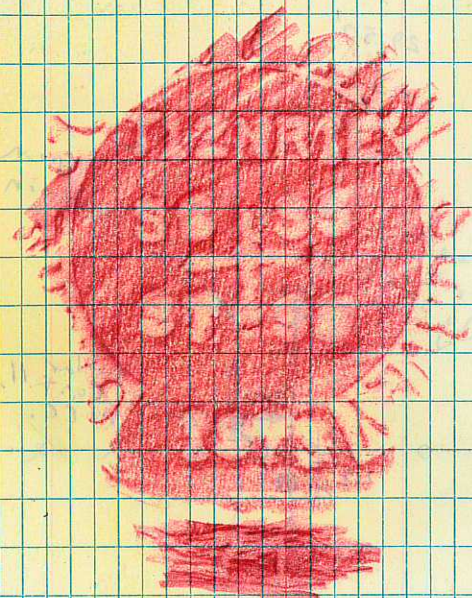
NE. cor. sec. 7

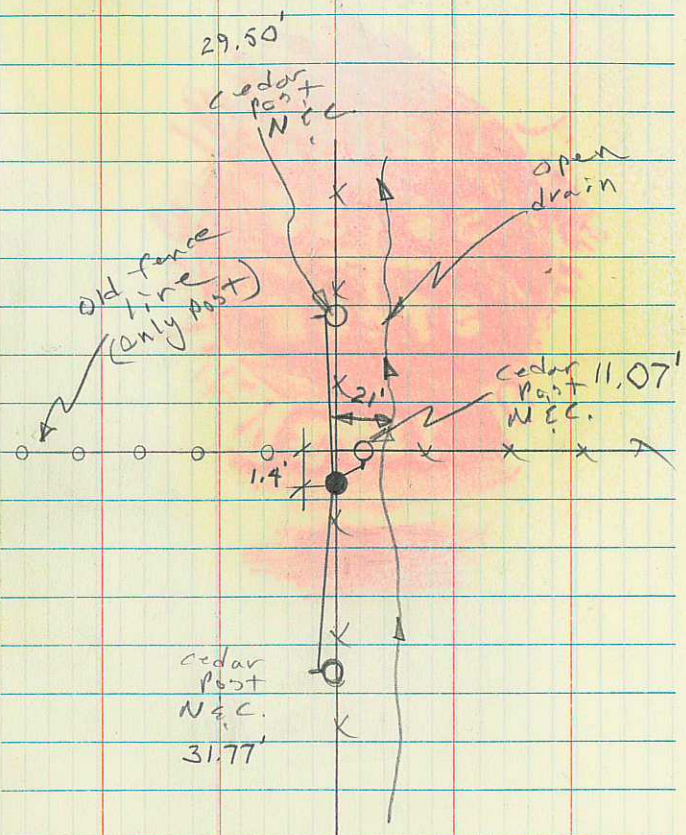
T12N R1E

Found a limestone 14x8x6  
firmly set and very  
plainly mkd. with 5  
notches on E. & S.  
faces.

Set 2" I.P. 24" long  
18" in the ground.  
Bury stone alongside.  
(No concrete)

3)





# 72

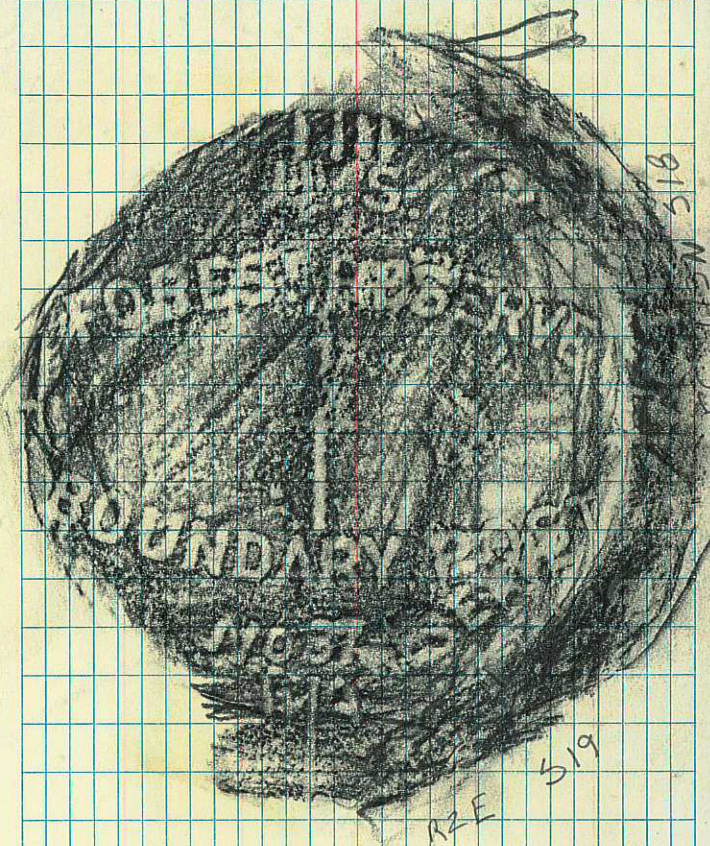
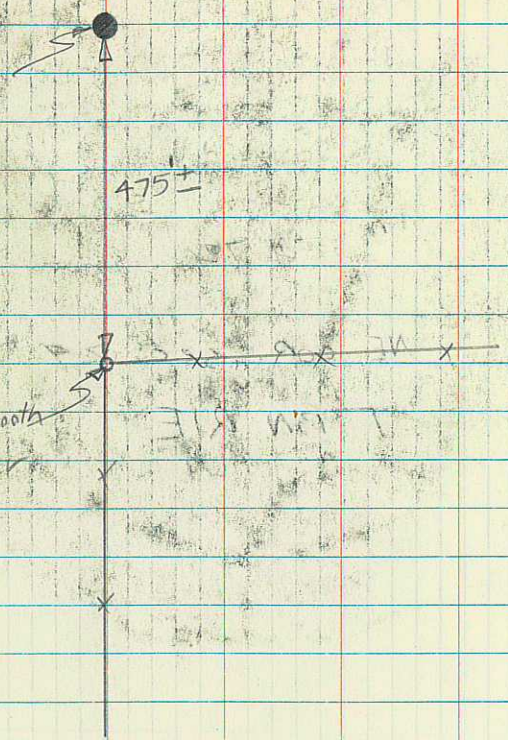
NE COR. sec. 29

T 13N R 1E

rdy.  
post  
# 87

475

5/8 smooth  
rebar



RZE 519

84  
6-13-73

Val Payne  
Clair Smith  
Philip Leslie

# 73

E 1/4 COR. SEC 29  
T11N R1W

Found rebar set by  
Valley Eng. above 3"  
Cedar post 2' below road  
surface.

Set 2" I.P. 12" long  
flush with road  
surface. Concrete  
around pipe.

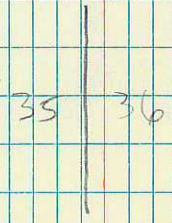


36  
6-13-73

Philip Leslie  
Val Payne  
Clair Smith

#74

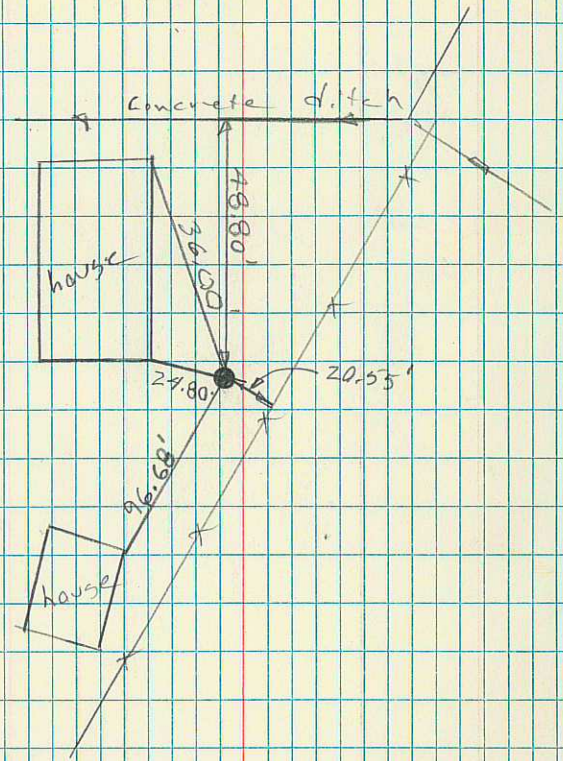
E. 1/4 COR. SEC. 35  
T 11 N R 1 W





Found a sandstone  
in lawn with top 7"x8" <sup>iron</sup> pipe  
at ground level.

corner verified by  
local surveyors  
and property owners



6-13-73

Phillip Leslie  
Val Payne  
Clair Smith

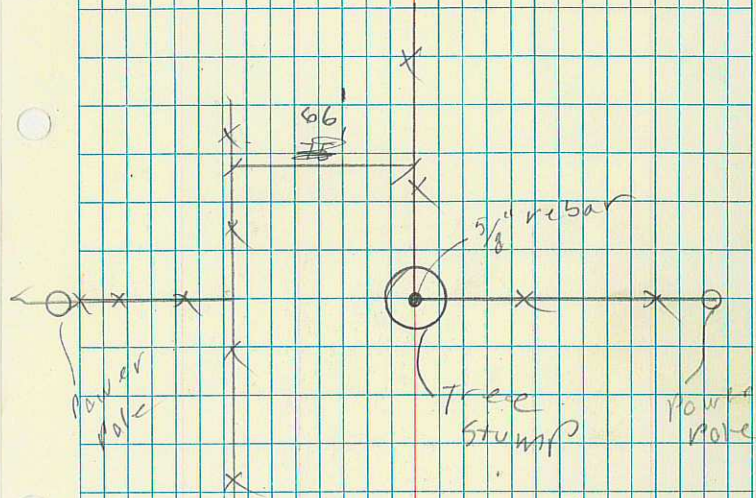
# 75

N 1/4 COR. SEC. 15

T 10 N R 1 W

16 | 15

Found  $\frac{5}{8}$ " smooth rebar  
set in Popular Tree  
stump 4' above ground



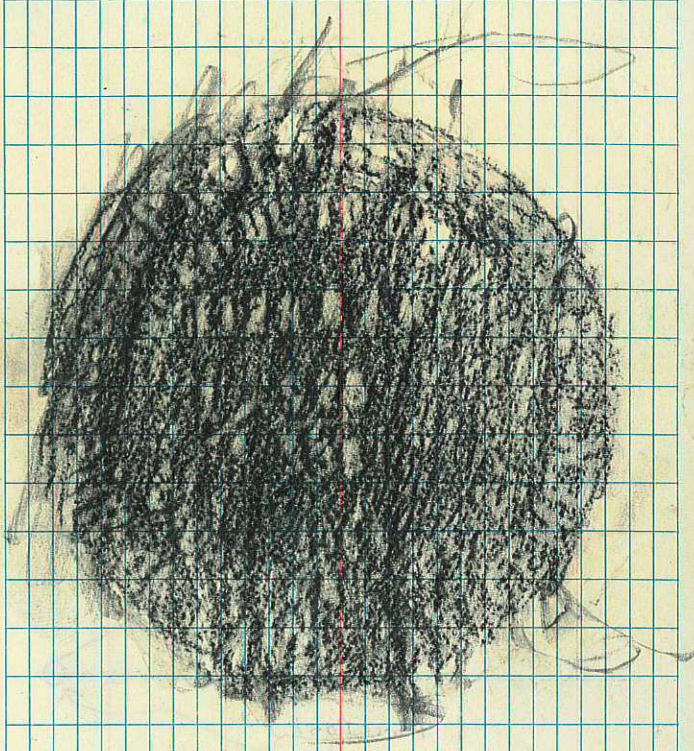
# 76

N. 1/4 cor. Sec 36

T 12N R 2 W

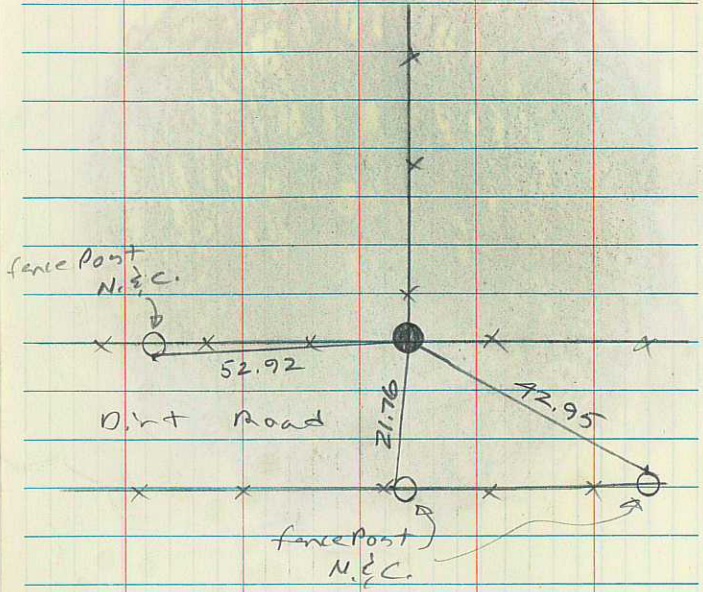
Found a standard  
brass cap firmly  
set and plainly mkd.

old onig. stone lying  
alongside T.P. very  
plainly mkd. 1/4



TIZN RZW

1/4  $\frac{525}{536}$   
1968



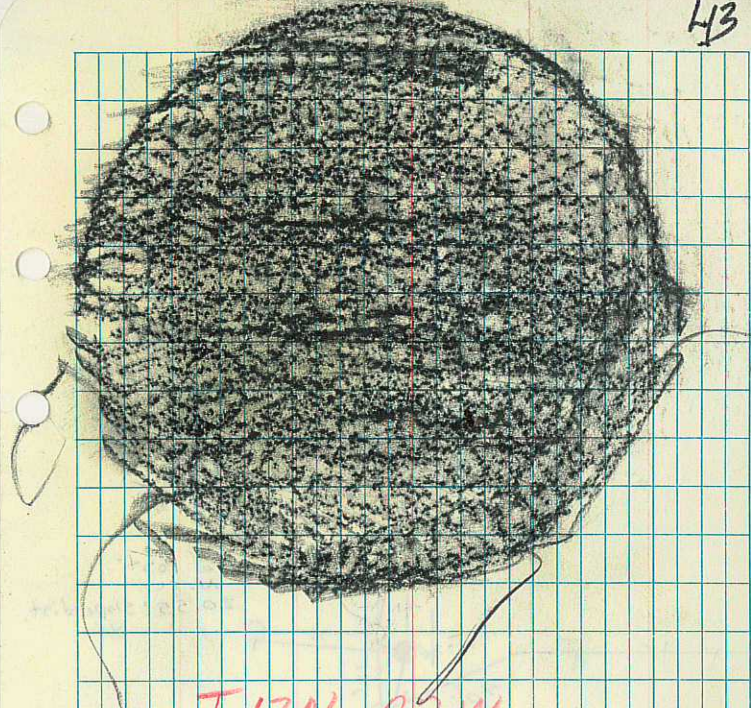
# 77

NE. CO. SEC. 35

T12 R12 W

Found standard T.P.  
firmly set in a  
mound of stone.  
orig. car. stone being  
plainly marked in mound  
along side T.P.

43

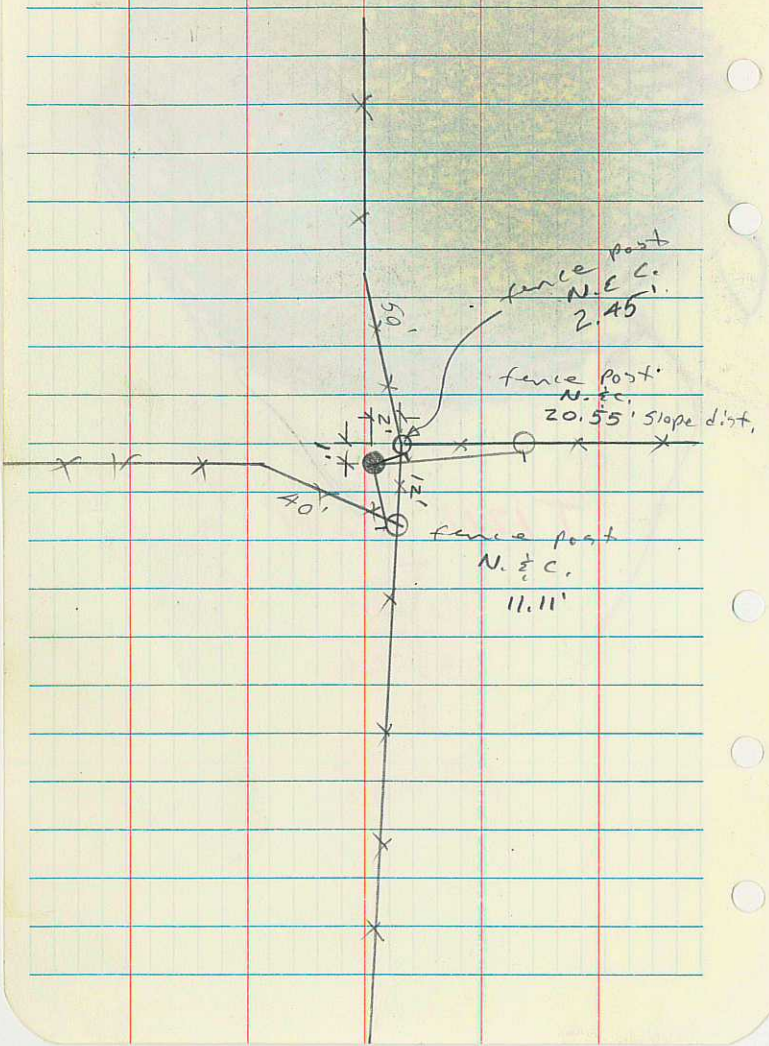


T12N R2W

26 | 25

35 | 36

1968?



# 78

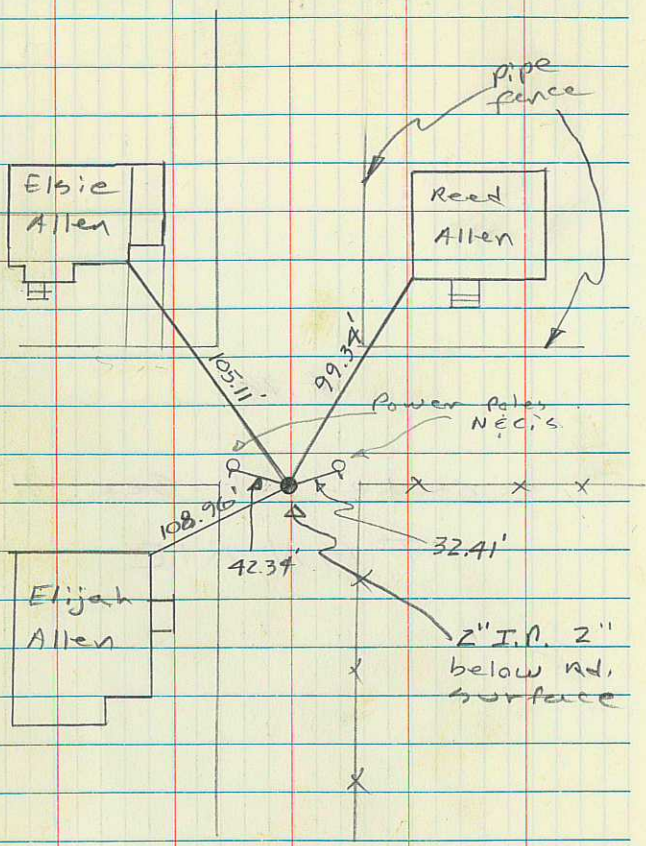
Center of Sec. 11  
T 14 N, R 1 E



P. Leslie  
V. Payne  
L. McMullin

# 80

N. 1/4 cor. sec. 23  
T9N R3E

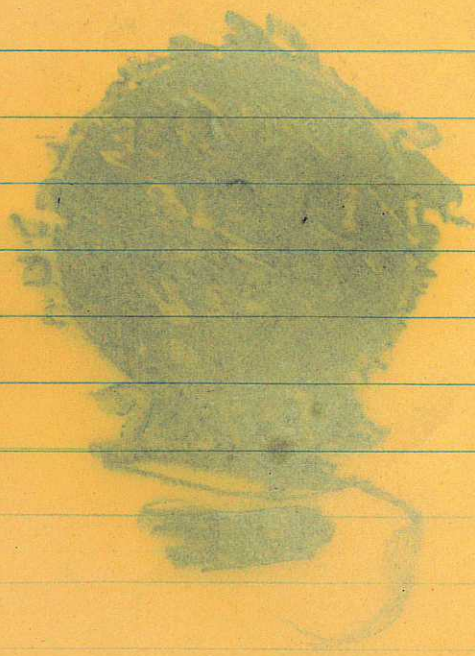


Found a sandstone  
16x12x7 in. firmly  
set and very plainly  
marked 1/4 on S. face

set 2" I.P. 24" long  
18" in gd. Bury orig.  
along side I.P.

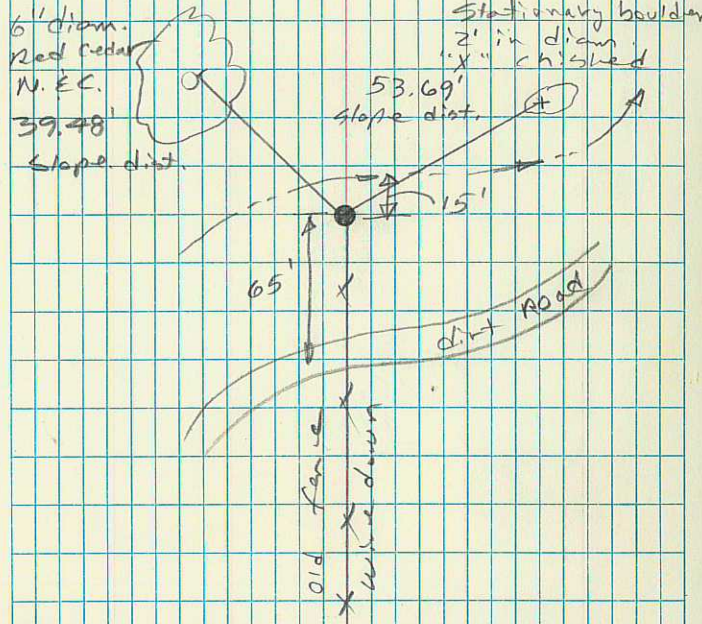


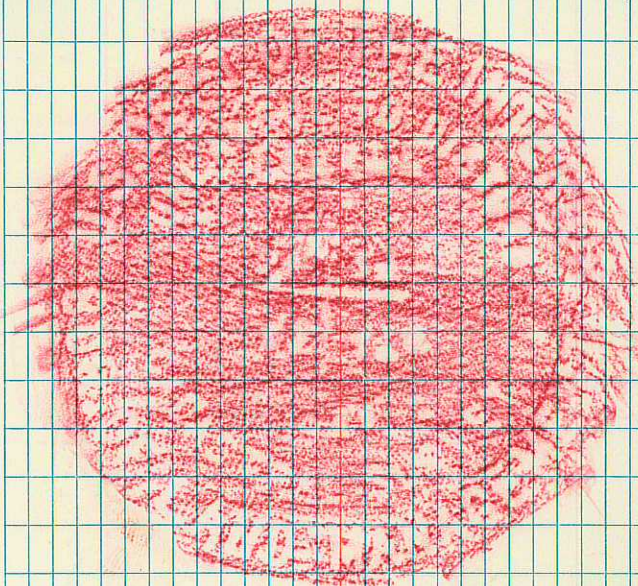
24



#30

47





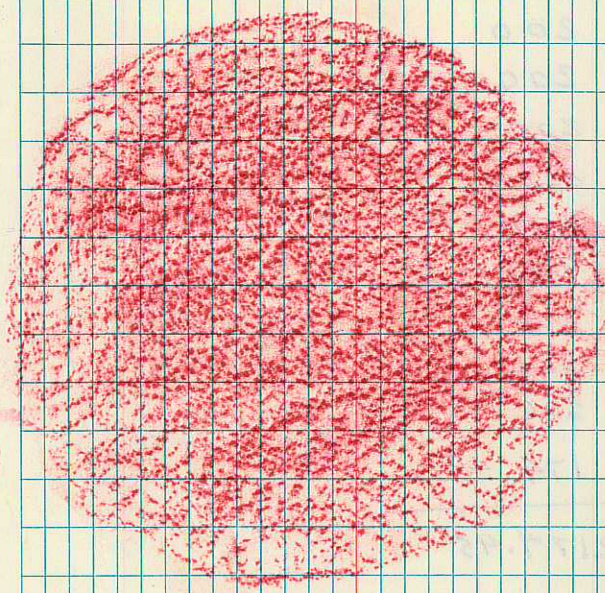
TBN AIE

34 | 53

57 | 510

1966

20  
40



TORRIE

1/4

59 / 510

1966

200

200

200

200

209

200

200

^ 200

200

200

174.45

2174.45

h

20

!

STA Dist. HZ. ~~4~~ B.S.  
 AZ.  $\Delta$  STA.  
 MKR.

19°05'05"

S. corner  
of Beacon  
AZ.  
MKR.

5.36 135°25'00"  $\Delta$  STA.

1/4 COR.  
AZ.  
MKR.

296.60 91°37'25"  $\Delta$  STA

SW. COR.  
MILLERS  
HANGER

60.08 102°04'00" AZ  
MKR.

NW. COR.  
MILLERS  
HANGER

79.33 192°03'15" AZ.  
MKR.

SE COR.  
MILLERS  
HANGER

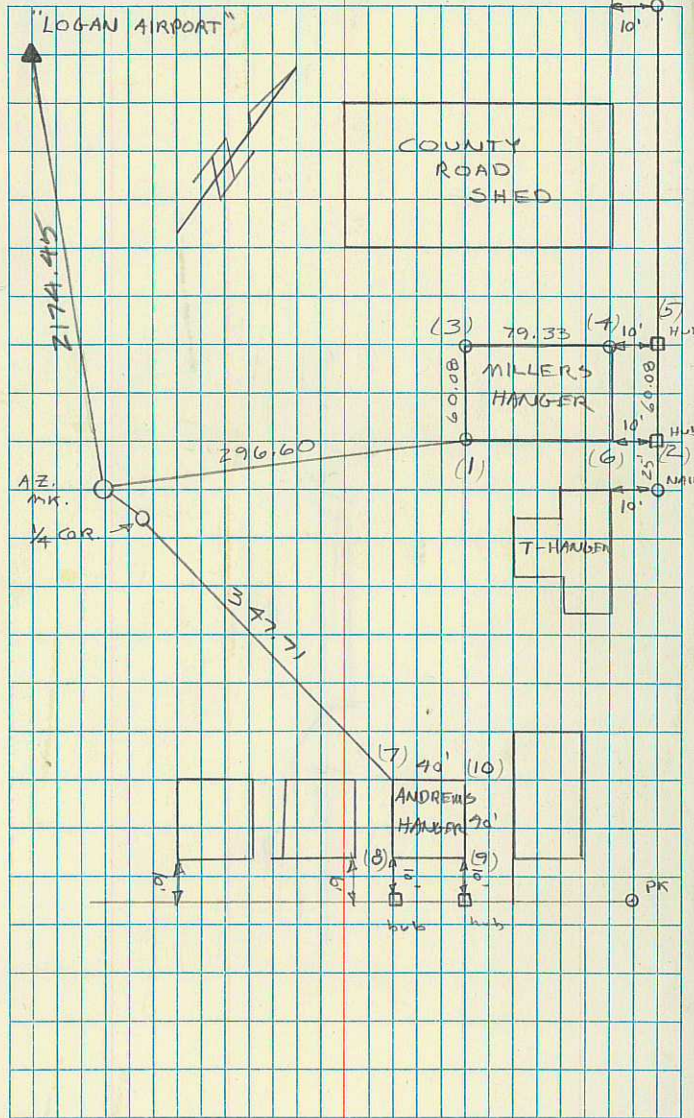
40.00 223°49'15" 1/4 COR.

NW COR.  
Ronald Andrews  
Hanger

SW COR.  
Andrews  
Hanger

347.71 59°12'10" SW. COR.  
MILLERS  
HANGER

NW COR.  
Andrews  
Hanger



FORM 100-101

PLANNED  
CARE

